

Grass Planting Grid

The grass planting grid is made of modified high molecular weight HDPE as raw material, which is green, environmentally friendly and completely recyclable. It perfectly realizes the two-in-one lawn and parking lot. The grass planting grid is pressure-resistant, wear-resistant, impact-resistant, anti-aging and corrosion-resistant, improving the quality. Saves investment; unique flat plug-in lap joint, labor-saving, fast, and adjustable expansion joint.

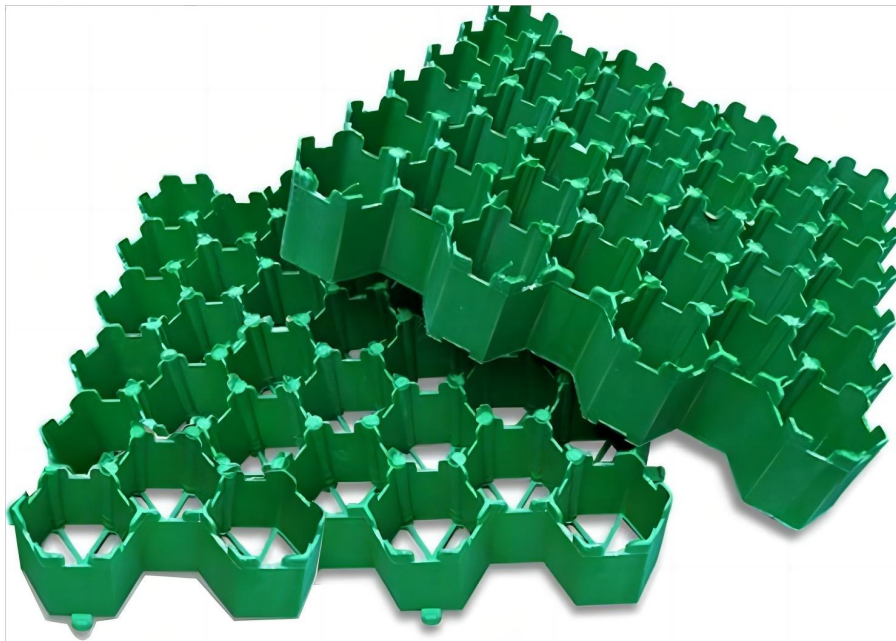


Grass Planting Grids divide a lawn into several sections that bear a certain amount of weight, and reinforce the surface to prevent soil erosion. Grass Planting Grids are often used in the parking space and drive ways of a parking lot. They adopt reprocessed plastic made of 100% high density polyethylene (HDPE). The coverage rate of a lawn can be as high as 95% with a bearing capacity of 200 tons/sq m. Meanwhile, Gravel Grids provide a solution to the flaws of cement tiles, and they are applicable in arid and hot regions.



Grass Planting Grid Features:

- Simple structure in linear type, easy in installation and maintain.
- Adopting advanced world famous brand components in pneumatic parts, electric parts and operation parts.
- High pressure double crank to control the die opening and closing.
- Running in a high automation and intellectualization, no pollution.
- Apply a linker to connect with the air conveyor, which can directly inline with filling machine.
- Local material can be used during construction, reduce the construction cost, easy to be transported after folding together.



[Grass Planting Grid]

Each Grass Planting Grid shall be perfectly shaped, and they can be molded into arc or other shapes with universal tools. Alternate permutation on the bottom of Gravel Grids will nicely fix them on the foundation. If needed, the borders of the lawn can be framed or fixed by fastening nails as a way to avoid possible thermal expansion. A 1-1.5cm crevice shall be intentionally created between every two Grass Planting Grids.

APPLICATION

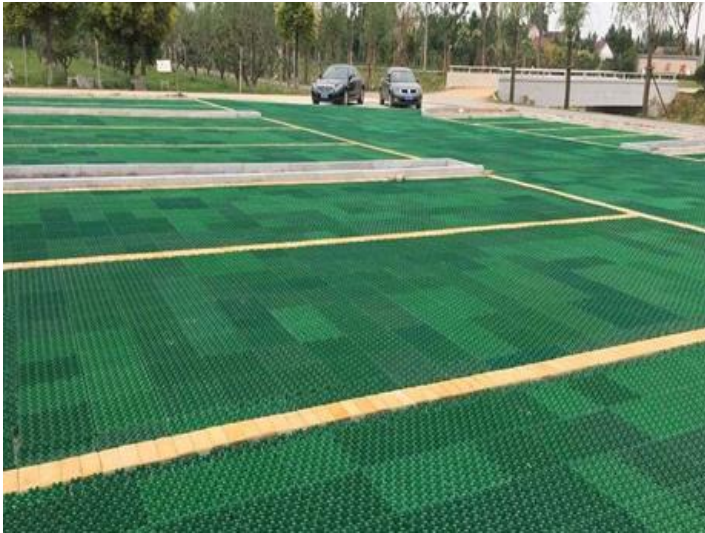
Made of HDPE, Grass Planting Grids are environmental friendly, and recyclable, and perfectly combine the lawn with the parking lot. Gravel Grids over pressure resistant, wear resistant, anti-aging, corrosion resistant, so that the quality is improved and investment becomes less; the unique horizontal insertion is time-saving and convenient, and the crevice is adjustable.

1. Grass-planting grid base treatment for parking spaces.
2. Grass-planting grid base treatment for fire lanes.
3. Grass-planting grid base treatment for sidewalks.

SPECIFICATIONS OF GRASS PLANTING GRID

| GRASS PLANTING GRID | | | |
|---------------------|--|------------|------------|
| Model | GPP-38 | GPP-48 | GPP-68 |
| Size(mm) | 410×390×38 | 410×390×48 | 410×390×68 |
| | 500×500×38 | | 500×500×68 |
| Pressure Strength | 160ton/sqm-250ton/sqm | | |
| Material | HDPE (high-density polyethylene) | | |
| Product Type | Virign material and Recycled Material | | |
| Durability | at least 4 years in neutral ground of 4 < pH < 9 | | |
| Working Temperature | Apply in temperature of -10°C to 50°C | | |
| Anti HCL | 30%x24h, no visible change | | |
| Thermal Aging | 70ICx24h, no visible change | | |
| Anti UV | UPE>30 T(UVA)AV<5%, qualified | | |

APPLICATION SCENARIOS OF HDPE GEOCEL



[Stabilize river embankments in Egypt]



[Road support in Algeria]

GRASS PLANTING GRID CONSTRUCTION

Construction method of Grass Planting Grid:

- The gravel foundation needs to be compacted. The degree of compaction should take into account the maximum bearing pressure. The surface must be flat, and a drainage slope of 1%-2% is preferred. The seepage holes in the concrete foundation must be filled with pebbles or gravel and sand to prevent soil loss.
- Each piece of grass planting grid has a link buckle, which is interlocked when paving. After the grass planting grid is paved, use a small roller or a flat vibrator to press the surface of the grass planting grid back and forth once. Any uneven areas need to be trimmed until the grass planting grid surface reaches a level.
- It is recommended to use high-quality nutrient soil for filling soil in the grass planting grid. When returning the soil, sprinkle water to allow the soil to settle. Use a bamboo broom to evenly sweep the nutritious soil on the surface of the grass planting grid into the grass planting grid holes. The height of the soil layer should be 5-10mm lower than the plane of the grass planting grid.
- First slope and backcourt;
- Manila grass is generally used for turf. This kind of grass is resistant to trampling and easy to grow. When laying the turf, a gap of about 20mm should be left and the paving should be staggered in a vertical pattern.
- Gravel fill: Fill the grid with the desired aggregate to top of the grid.
- During use or after the rainy season, if a small amount of planting soil is lost, you can evenly sprinkle some soil or sand from the lawn surface to fill the soil lost due to rain erosion.

BENEFITS OF GRASS PLANTING GRID

1. Complete greening: The grass grid provides more than 95% of the grass planting area, has a complete greening effect, can absorb sound and dust, and significantly improves the quality of the environment;
2. Save investment;
3. Smooth and complete: The unique and stable flat overlapping of the grass planting grid connects the entire paved surface into a flat whole, avoiding local depressions and making construction extremely convenient;
4. High strength and long life;
5. Performance stability, UV resistance, acid and alkali corrosion resistance, wear resistance, weather resistance - 40°C-90°C;
6. Excellent drainage: The gravel load-bearing layer provides a good water drainage function and facilitates the drainage of excess precipitation;
7. Convenient construction: The side buckle design makes the construction simple, convenient, fast and stable;
8. Green and environmentally friendly: The grass planting grid is safe and stable, recyclable, absolutely pollution-free, and comprehensively protects the lawn.

